



Unit Tag	Qty	Model No	Net Cooling	Nominal Voltage	Refrigerant Type
TCA21TSARH2403P	1	TCA21TSARH2403P	20.76	240-3-60.0	R410A

Evaporator Data		Heat Recovery Data		Performance Data	
EWT (°F)	54.00	EWT (°F)	104.00	EER (Btu/W·h)	11.87
LWT (°F)	44.00	LWT (°F)	113.00	IPLV.IP (Btu/W·h)	18.56
Design Flow Rate (USGPM)	55.00	Design Flow Rate (USGPM)	55.00		
Evap. Press. Drop (ft H2O)	13.38	Total Press. Drop (ft H2O)	13.38		
Fluid	Water	Condenser Data		Physical Data	
Strainer Press. Drop (ft H2O)	0.925	Ambient Temp. Design (°F)	95.0	Rigging Wt. (lb)	1548
Ext. Kit Press. Drop (ft H2O)	0.567	Altitude (ft)	0.000	Operating Wt. (lb)	1561
Total Press. Drop (ft H2O)	14.87	Compressor Type	Scroll - Hermetic	Refrigerant Charge (lb)	29.9
Fouling Factor (h.ft².F/Btu)	0.000100				

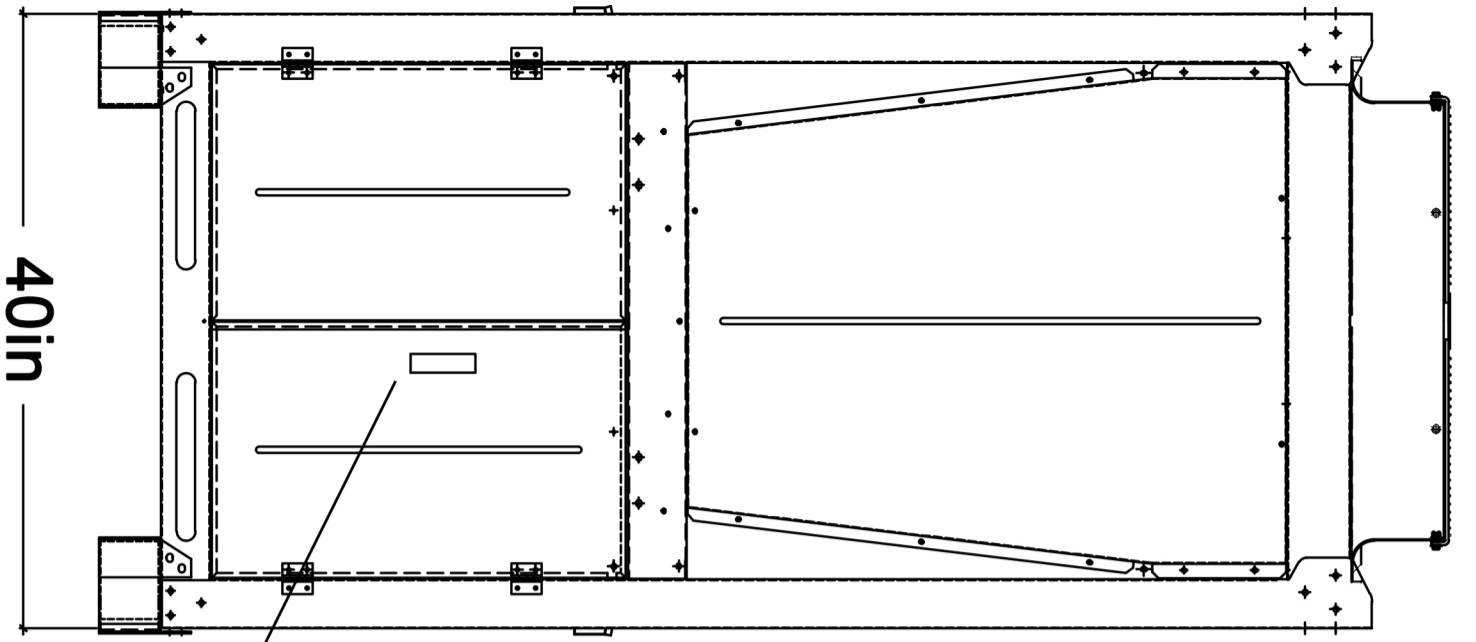
Electrical Data				
Circuit	1	2	3	4
Compressor RLA	30 / 30	30 / 30		
Fan QTY/FLA (each)	1 / 4	1 / 4		
High LRA Current	75 / 75	75 / 75		

Single Point				
Min. Circuit Ampacity	120			
Recommended Fuse/CB Rating	150			
Max. Inverse Time CB Rating	150			
Max. Dual Element Fuse Size (A)	150			
Unit Short Circuit Withstand (STD)	5 [kA]			
Wires Per Phase	1			
Wire Range (Lug Size)	#1 AWG			
Starter Type	Across The Line			
			Operating Condition Electrical Data	
			Compressor kW	22.30
			Total Fan kW	2.20
			Total kW	24.50

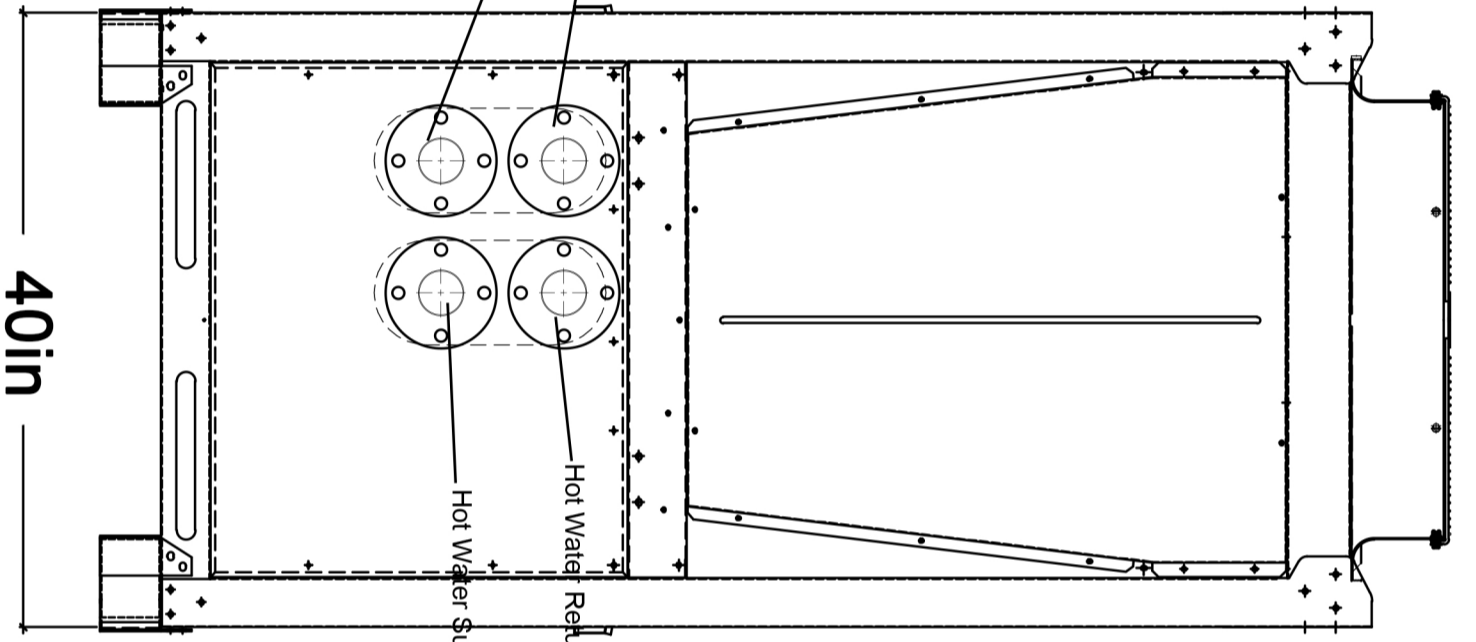
Notes:

Performance at AHRI Conditions					
Evaporator Data		Condenser Data		Performance Data	
EWT (°F)	54.00	Ambient Temp. (°F)	95.0	EER (Btu/W·h)	11.87
LWT (°F)	44.00	Altitude (ft)	0.000	IPLV.IP (Btu/W·h)	18.56
Flow Rate (USGPM)	55.00			Net Cooling Capacity	20.76
Pressure Drop (ft H2O)	13.38				
Fluid	Water				
Fouling Factor (h.ft².F/Btu)	0.000100				
Fluid Volume (USGAL)	2.570				

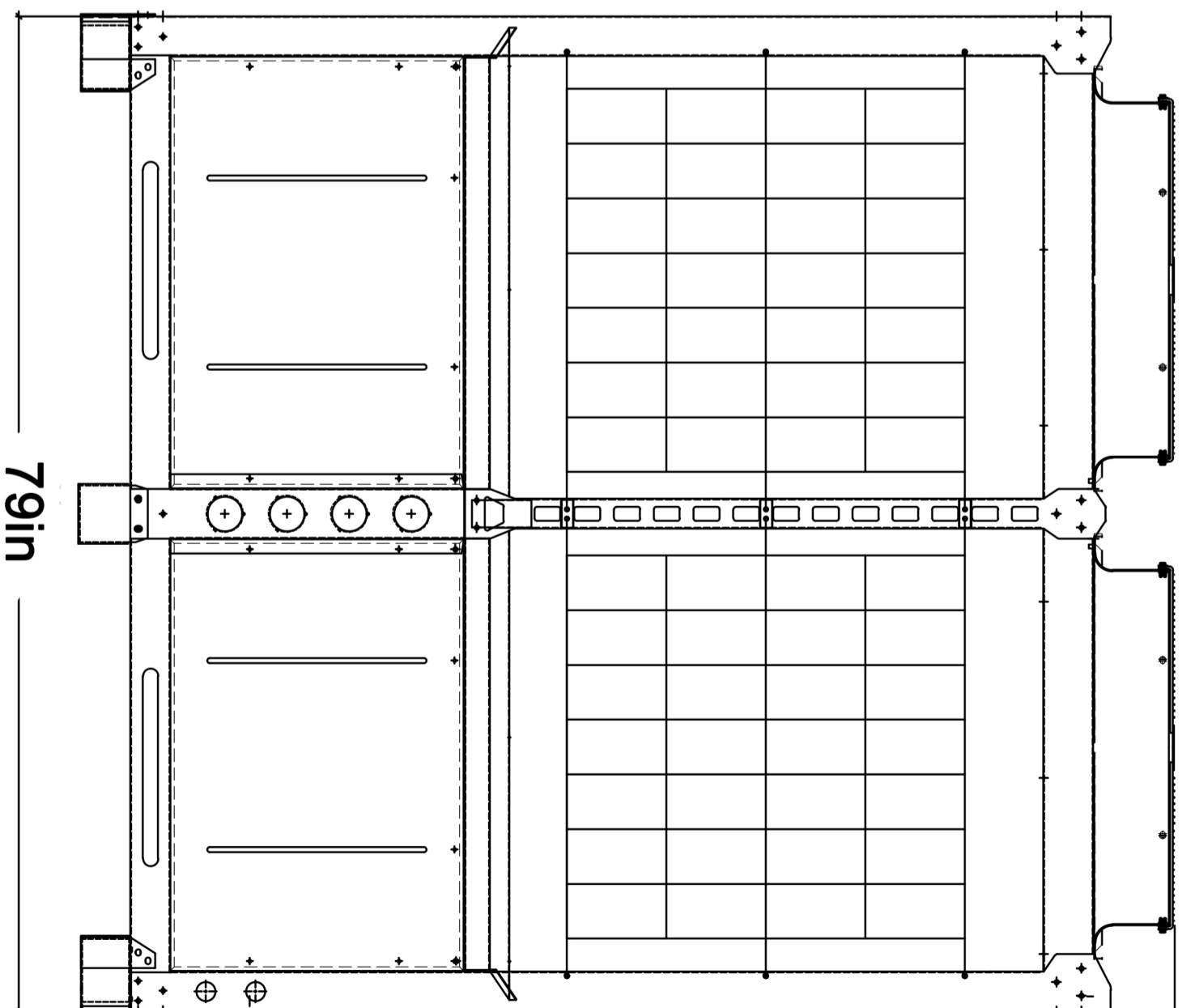
<https://tricleanair.com/techsheets/>



Chilled Water Return
Chilled Water Supply
Electrical Control Box



Hot Water Return
Hot Water Supply



82in
88in

